

The Canterbury Academy Trust

Schools for all the Talents



The Canterbury Academy admission arrangements

For entrance into Year 7 in September 2026

The Canterbury Academy recruits from the full range of abilities to create a comprehensive intake.

If you wish to apply for a place at The Canterbury Academy, you will be required to nominate us as one of your preferences on the common application form. Information and application forms are available online at www.kent.gov.uk/ola or through your child's primary school.

Students will be admitted at age 11. The number of intended admissions for the year commencing 2025 will be 210 (with an additional 6 places reserved for children with statements for entrance into the Speech and Language Unit and 4 additional places into the Cullum Centre Autism Spectrum Disorder special resource-based provision and 2 additional places into the Hearing Impairment special resource-based provision). 31 places will be initially reserved for selective music students. All students are recommended to sit a banding assessment and those candidates wishing to apply for a selective music place will also be required to attend an audition. Before the application of oversubscription criteria children with an Educational Health Care Plan which names the school will be admitted. As a result of this the published admissions number will be reduced accordingly.

Requests for admission outside of the normal age group should be made to the Chief Executive Officer as early as possible in the admissions round associated with that child's date of birth. This will allow the school sufficient time to make a decision before the closing date. Parents are not expected to provide evidence to support their request, however where provided it must be specific to the child in question. This might include medical or Educational Psychologist reports. There is no legal requirement for this medical or educational evidence to be secured from an appropriate professional, however, failure to provide this may impede the academy's ability to agree. Parents are required to complete an application for the normal point of entry at the same time in case their request is declined.

Students wishing to sit either the banding assessment or apply for a selective music place will be required to complete a supplementary information form available from the school. Deadline date for returning the completed form to the school will be the same date as the Common Application Form is required to be returned to Kent.

You will receive an invitation to the banding assessment that will either be held at the school on a Saturday in November or at home. Should you be unable to attend you may request an alternative date. The banding assessment is not an entry test, it is designed to ensure that students of all abilities have an equal chance of gaining a place at The Canterbury Academy and enable the school to acquire a comprehensive profile. To ensure a comprehensive intake a normal distribution will be used, and we will use the following band identifiers:

Band	1	2	3	4	5	6	7	8	9
%	4	7	12	17	20	17	12	7	4

Where students have not taken the banding assessment, they will be ranked according to the oversubscription criteria and allocated a place only in the event that there are available spaces after students who did take it have been considered. Year 6 students who are successful in the Kent, or other formal selective test will get priority consideration for entry into the Simon Langton Grammar stream programme for boys and girls at The Canterbury Academy.

Selective music places are allocated independently of the banding assessment (although it is recommended that they take the banding assessment as well). Students will be invited to perform to members of the music department and a judgement will be made on their musical aptitude according to one or more of the following criteria:

1. Your child has tuition in a musical instrument.
2. Your child is a member of a school, church, or similar choir, or of a dance/drama organisation.
3. Your child has had no formal training but is musical and would like to pursue the subject further.

Not more than 31 places will be reserved for students with musical ability. The audition will rank students according to the given criteria. Successful applicants will be expected to take up vocal or instrumental tuition, to attend at least one music/drama club each week and participate in the academy performances. Where two students are of equal ability, the one living nearer to the academy would gain preference. If there are insufficient children who have satisfied the published entry requirement for a selective place, then the places will be offered to other children.

Where applications for admission exceed the number of places available the following criteria will be applied, in the order set out below, to decide which children to admit:

Over Subscription Criteria

a) A looked after child is a child who is (a) in the care of a local authority, or (b) being provided with accommodation by a local authority in the exercise of their social services functions (see the definition in Section 22(1) of the Children Act 1989) at the time of making an application to a school.

A previously looked after child means such children who were adopted (or subject to child arrangements orders or special guardianship orders) immediately following having been looked after and those children who appear to the admission authority to have been in state care outside of England and ceased to be in state care as a result of being adopted.

A child is regarded as having been in state care outside of England if they were in the care of or were accommodated by a public authority, a religious organisation, or any other provider of care whose sole or main purpose is to benefit society.

b) Places are then awarded to children on roll in the Trust (Primary phase) at the time of application for a place at secondary transfer.

c) Children with a brother or sister attending the Trust (Primary and Secondary or sixth form) when the child starts. In this context brother or sister means a child who lives as brother or sister in the same house, including natural brothers and sisters, adopted siblings, stepbrothers or sisters and foster brothers and sisters.

d) Child of a permanent member of staff, providing the child lives in the same property as the member of staff. In this context child means a natural son/daughter, stepchild, adopted or

fostered child. Members of staff must have been employed for two years or more at the time of application for school admissions is made and/or the member of staff is recruited to fill a vacancy or post which there is a demonstrable skills shortage. The definition does not include contract or temporary staff.

e) Health and Special Access Reasons – Medical, health, social and special access reasons will be applied in accordance with the academy’s legal obligations, in particular those under the Equality Act 2010. Priority will be given to those children whose mental or physical impairment means they have a demonstrable and significant need to attend The Canterbury Academy. Equally, this priority will apply to children whose parents’/guardians’ physical or mental health or social needs mean that they have a demonstrable and significant need to attend this particular academy. Such claims will need to be supported by written evidence from a suitably qualified medical or other practitioner who can demonstrate a special connection between these needs and The Canterbury Academy.

f) Nearness of children's homes to school - we use the distance between the child’s permanent home address (defined in KCC’s annual admissions prospectus) and the school, measured in a straight line using the National Land and Property Gazetteer (NLPG) address point. Distances are measured from a point defined as within the child’s home to a point defined as within the school as specified by NLPG. The same address point on the school site is used for everybody. When we apply the distance criterion for the school, these straight-line measurements are used to determine how close each applicant’s address is to the school. Where applications are made from properties or abodes that are not registered to the NLPG, including new build properties, KCC may be required to use planning sites or other relevant co-ordinates. In exceptional circumstances where alternative co-ordinates are not available, measurements will be determined by a Senior Admissions Officer and confirmed by Head of Service.

The tiebreaker for all arrangements will be distance. In a tiebreaker situation, the proximity of an applicant’s home to the academy will be the decider. In the event that more than one applicant lives the same distance from home to the academy, as measured by the local authority, then a random selection will be applied.

In the event of an ability band not being full, places will be shared with other ability bands following the criteria above.

For families of service personnel with a confirmed posting, or crown servants returning from overseas places can be allocated in advance of the family arriving in the area (as long as one is available) provided the application is accompanied by an official letter that declares a relocation date and the address that they will be living at, or some other form of evidence of their intended address.

Late applications in the first instance will be processed in line with the Local Authority’s published admissions scheme. Deadline date for applications is 31st October 2025. From 23rd April 2026 applications must be made directly to the school where your child will be placed on a waiting list and places allocated based on the above criteria.

After a place has been offered, the academy reserves the right to withdraw the place in the following circumstances:

1. When a parent has failed to respond to an offer within a reasonable time.
2. When a parent has failed to notify the school of important changes to the application information.

3. The admission authority offered the place on the basis of a fraudulent or intentionally misleading application from a parent.

For entrance into Sixth Form in September 2026

Students will be admitted to Year 12 if they reach the necessary entry recommendations for the course they wish to follow. Further information is available in the sixth form prospectus. Priority will be given to existing students transferring from Year 11. The pupil admission number (PAN) for external candidates will be 50 but this figure may be exceeded in the event that this and the number of internal students transferring into Year 12 is less than the overall figure for the year group, which is 210. Consideration will also be given to students who wish to retake year 12. On occasions entry to year 13 will be permitted where the student has already completed year 12 at an alternative establishment.

In the event of oversubscription then the following will be applied:

a) A looked after child is a child who is (a) in the care of a local authority, or (b) being provided with accommodation by a local authority in the exercise of their social services functions (see the definition in Section 22(1) of the Children Act 1989) at the time of making an application to a school.

A previously looked after child means such children who were adopted (or subject to child arrangements orders or special guardianship orders) immediately following having been looked after and those children who appear to the admission authority to have been in state care outside of England and ceased to be in state care as a result of being adopted.

A child is regarded as having been in state care outside of England if they were in the care of or were accommodated by a public authority, a religious organisation, or any other provider of care whose sole or main purpose is to benefit society.

b) Places are then awarded to children on roll in the Trust (Secondary phase) at the time of application for a place in the sixth form

c) Children with a brother or sister attending The Trust (Primary and Secondary phase or 6th form) when the child starts. In this context, 'brother or sister' means a child who lives as a brother or sister in the same house, including natural brothers and sisters, adopted siblings, stepbrothers or sisters and foster brothers and sisters.

d) Child of a permanent member of staff, providing the child lives in the same property as the member of staff. In this context child means a natural son/daughter, stepchild, adopted or fostered child. Members of staff must have been employed for two years or more at the time of application for school admissions is made and/or the member of staff is recruited to fill a vacancy or post which there is demonstrable skills shortage. The definition does not include contract or temporary staff.

e) Ability at sport or performing arts as determined by trial, audition, and references.

f) Health and Special Access Reasons – Medical, health, social and special access reasons will be applied in accordance with the academy's legal obligations, in particular those under the Equality Act 2010. Priority will be given to those children whose mental or physical impairment means they have a demonstrable and significant need to attend The Canterbury

Academy. Equally, this priority will apply to children whose parents'/guardians' physical or mental health or social needs mean that they have a demonstrable and significant need to attend this particular academy. Such claims will need to be supported by written evidence from a suitably qualified medical or other practitioner who can demonstrate a special connection between these needs and The Canterbury Academy.

g) Nearness of children's homes to school - we use the distance between the child's permanent home address (defined in KCC's annual admissions prospectus) and the school, measured in a straight line using the National Land and Property Gazetteer (NLPG) address point. Distances are measured from a point defined as within the child's home to a point defined as within the school as specified by NLPG. The same address point on the school site is used for everybody. When we apply the distance criterion for the school, these straight-line measurements are used to determine how close each applicant's address is to the school. Where applications are made from properties or abodes that are not registered to the NLPG, including new build properties, KCC may be required to use planning sites or other relevant co-ordinates. In exceptional circumstances where alternative co-ordinates are not available, measurements will be determined by a Senior Admissions Officer and confirmed by Head of Service.

For families of service personnel with a confirmed posting, or crown servants returning from overseas places can be allocated in advance of the family arriving in the area (as long as one is available) provided the application is accompanied by an official letter that declares a relocation date and the address that they will be living at, or some other form of evidence of their intended address.

The Canterbury Academy



Part of The Canterbury Academy Trust
 Knight Avenue, Canterbury, CT2 8QA
 Tel: 01227 463971
 Email: enquiries@canterbury.kent.sch.uk
 Website: www.canterburyacademy.co.uk

Request for Banding Assessment

Completion of this form **does not** constitute an application to The Canterbury Academy.
 This is **NOT** an entry test.

You **MUST** complete the Local Authority Common Application Form.

Please complete in CAPITAL LETTERS

Student's surname									
Student's first name									
Student's gender					Date of birth				
Student's home address									
					Postcode				
Student's primary school									
Parent/Carer name									
Parent/Carer salutation	Mr		Mrs		Miss		Ms		Other
Home telephone number					Mobile				
Email									

Timescale

- Common Application Forms should be submitted to your Local Authority by 31st October 2025
- This Banding Assessment must be returned to the school by 31st October 2025
- You will receive an invitation to the Banding Assessment during the week beginning 3rd November 2025
- The Banding Assessments will be completed online at home or at The Canterbury Academy during November 2025. Children already on roll at The Canterbury Primary School are **NOT** required to complete this form.
- In accordance with the School Admission Arrangements, parents will be notified which school their child has been offered on the 2nd March 2026

The Banding Assessment is NOT an entry test.

It is designed to ensure that students of all abilities have an equal chance of gaining a place at The Canterbury Academy. This is to enable the school to acquire a comprehensive profile.

This information will only affect the admissions process if The Canterbury Academy is over-subscribed (if it receives more applications than it has places for). Where the number of applications is greater than the published admission number, applications will be considered against the overall subscription criteria as set by The Canterbury Academy. Students who sit the Banding Assessment and can therefore be allocated to one of the 9 bands will be considered for available places before those who have not taken the Banding Assessment.

In partnership with Simon Langton  Grammar School for Boys to provide a grammar school band for boys and girls in a comprehensive school for all the talents

City View Pre School and Nurseries Ltd	The Canterbury Primary School	The Canterbury Academy	The Canterbury Academy Sixth Form	The Enterprise and Employability College	The Youth and Community Service
City View, Franklyn Road Canterbury CT2 8PT	City View, Franklyn Road Canterbury CT2 8PT	Knight Avenue Canterbury CT2 8QA	Knight Avenue Canterbury CT2 8QA	Knight Avenue Canterbury CT2 8QA	Knight Avenue Canterbury CT2 8QA
Tel: 01227 463971	Tel: 01227 462883	Tel: 01227 463971	Tel: 01227 463971	Tel: 01227 463971	Tel: 01227 463971

BANDING ASSESSMENT

The Banding Assessment will be based upon a standardized Non-Verbal Reasoning Assessment.

The Assessment is an online Assessment which means that students will either be invited to The Canterbury Academy or given details to sit a computer-based assessment from home which will last approximately 45 minutes.

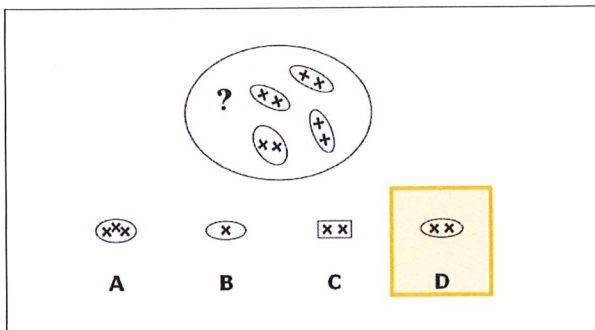
The types of questions included in the test provide easily understood ways of assessing the key reasoning processes, without confounding the assessment with any other irrelevant knowledge or skills. For example, there are no reading requirements or mathematical knowledge.

This test contains the three following types of question:

Classification questions

These questions assess the ability to see similarities. Pupils have to find another member of a set.

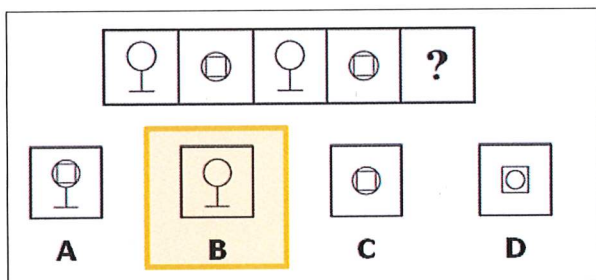
Example: Choose which of the shapes along the bottom should go in the big oval.



Series questions

In these questions, pupils have to see the similarity between a row of figures and use this to predict the next figure in the row.

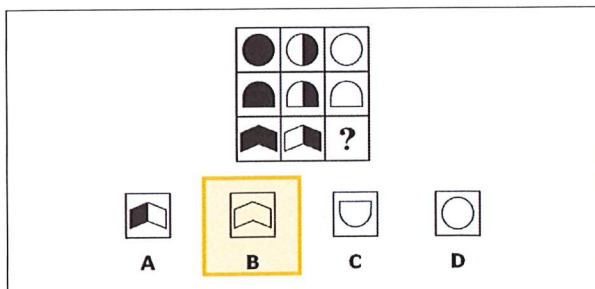
Example: Choose which box should go next.



Matrix questions

In this type of question, pupils have to find the relationship between the rows and columns of a matrix, and use this to deduce the missing figure.

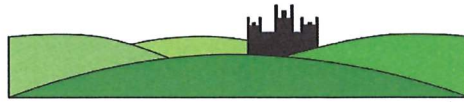
Example: Choose which little box completes the pattern in the big box.



The results from the Banding Assessment will place a student in one of nine standardized bands.

The Canterbury Academy Trust

Schools for all the Talents



Application for 15% Selective Music place

Supplementary Information for entry to The Canterbury Academy in September 2026. If you would like to apply for a Selective Music Place at this school, you must complete and return this form:

Name of Child - First Name	Surname
Primary School	
Date of Birth	
Name of Parent/Guardian	
Address _____ _____	
Town _____	Postcode _____
Telephone Number _____	Email _____
<p>Applications will be considered from students who have enthusiasm but as yet do not have any formal qualifications. Please tick all the entry criteria that apply.</p> <p>Please state if applicant has had tuition in a musical instrument: <input type="checkbox"/></p> <p>Name of instrument _____</p> <p>Grade Achieved _____</p> <p>Applicant is a member of a school, church or similar choir, or of a dance/drama organisation <input type="checkbox"/></p> <p>Name of organisation _____</p> <p>Any relevant information to support this application (please attach) <input type="checkbox"/></p> <p>Success in any music examination, including beginners level, if applicable <input type="checkbox"/></p> <p>Details _____</p> <p style="text-align: center;">This form must be returned to: The Canterbury Academy by 31st October 2025</p> <p>Following receipt of this form your child will be invited to an informal audition at which you will be asked to present any other evidence to support your application.</p>	