

The Canterbury Academy



Part of The Canterbury Academy Trust
Knight Avenue, Canterbury, CT2 8QA
Tel: 01227 463971
Email: enquiries@canterbury.kent.sch.uk
Website: www.canterburyacademy.co.uk

Request for Banding Assessment

Completion of this form **does not** constitute an application to The Canterbury Academy.

This is **NOT** an entry test.

You **MUST** complete the Local Authority Common Application Form.

Please complete in CAPITAL LETTERS

Student's surname										
Student's first name										
Student's gender					Date of birth					
Student's home address										
					Postcode					
Student's primary school										
Parent/Carer name										
Parent/Carer salutation	Mr		Mrs		Miss		Ms		Other	
Home telephone number					Mobile					
Email										

Timescale

- Common Application Forms should be submitted to your Local Authority by 31st October 2025
- This Banding Assessment must be returned to the school by 31st October 2025
- You will receive an invitation to the Banding Assessment during the week beginning 3rd November 2025
- The Banding Assessments will be completed online at home or at The Canterbury Academy during November 2025. Children already on roll at The Canterbury Primary School are **NOT** required to complete this form.
- In accordance with the School Admission Arrangements, parents will be notified which school their child has been offered on the 2nd March 2026

The Banding Assessment is NOT an entry test.

It is designed to ensure that students of all abilities have an equal chance of gaining a place at The Canterbury Academy. This is to enable the school to acquire a comprehensive profile.

This information will only affect the admissions process if The Canterbury Academy is over-subscribed (if it receives more applications than it has places for). Where the number of applications is greater than the published admission number, applications will be considered against the overall subscription criteria as set by The Canterbury Academy. Students who sit the Banding Assessment and can therefore be allocated to one of the 9 bands will be considered for available places before those who have not taken the Banding Assessment.

In partnership with Simon Langton  Grammar School for Boys to provide a grammar school band for boys and girls in a comprehensive school for all the talents

City View Pre School and Nurseries Ltd	The Canterbury Primary School	The Canterbury Academy	The Canterbury Academy Sixth Form	The Enterprise and Employability College	The Youth and Community Service
City View, Franklyn Road Canterbury CT2 8PT	City View, Franklyn Road Canterbury CT2 8PT	Knight Avenue Canterbury CT2 8QA	Knight Avenue Canterbury CT2 8QA	Knight Avenue Canterbury CT2 8QA	Knight Avenue Canterbury CT2 8QA
Tel: 01227 463971	Tel: 01227 462883	Tel: 01227 463971	Tel: 01227 463971	Tel: 01227 463971	Tel: 01227 463971

BANDING ASSESSMENT

The Banding Assessment will be based upon a standardized Non-Verbal Reasoning Assessment.

The Assessment is an online Assessment which means that students will either be invited to The Canterbury Academy or given details to sit a computer-based assessment from home which will last approximately 45 minutes.

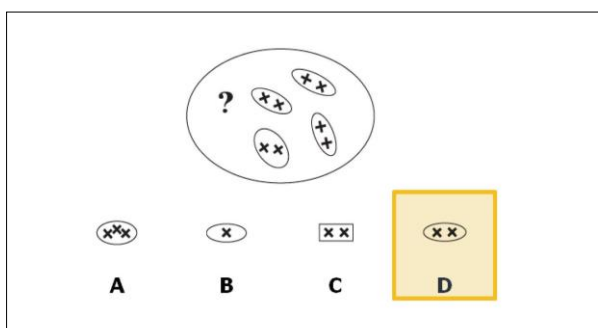
The types of questions included in the test provide easily understood ways of assessing the key reasoning processes, without confounding the assessment with any other irrelevant knowledge or skills. For example, there are no reading requirements or mathematical knowledge.

This test contains the three following types of question:

Classification questions

These questions assess the ability to see similarities. Pupils have to find another member of a set.

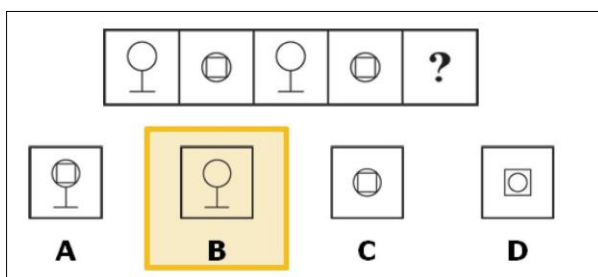
Example: Choose which of the shapes along the bottom should go in the big oval.



Series questions

In these questions, pupils have to see the similarity between a row of figures and use this to predict the next figure in the row.

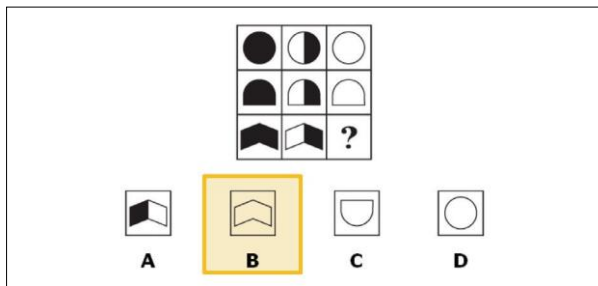
Example: Choose which box should go next.



Matrix questions

In this type of question, pupils have to find the relationship between the rows and columns of a matrix, and use this to deduce the missing figure.

Example: Choose which little box completes the pattern in the big box.



The results from the Banding Assessment will place a student in one of nine standardized bands.